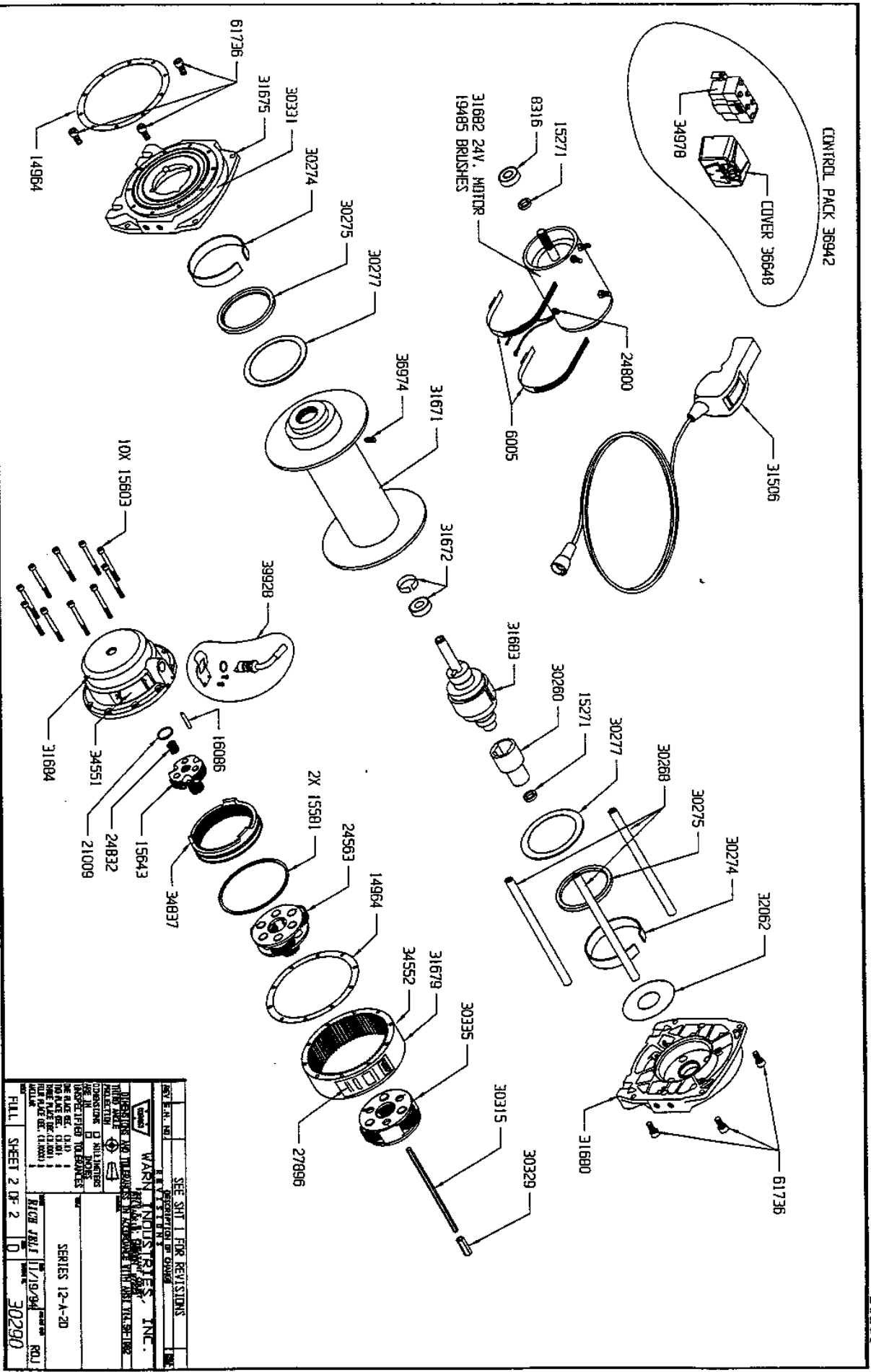


30290



REV. NO.	1	SEE SHIT FOR REVISIONS
DATE	11/19/94	
BY	JML	
WARN INDUSTRIES, INC. 1000 W. 10TH ST. SUITE 100 DENVER, CO 80202		
THIS DRAWING IS THE PROPERTY OF WARN INDUSTRIES, INC. IT IS TO BE USED ONLY FOR THE PROJECT AND FOR THE QUANTITY SPECIFIED THEREON. IT IS NOT TO BE REPRODUCED OR TRANSMITTED IN ANY FORM OR BY ANY MEANS, ELECTRONIC OR MECHANICAL, INCLUDING PHOTOCOPYING, RECORDING, OR BY ANY INFORMATION STORAGE AND RETRIEVAL SYSTEM.		
DATE	11/19/94	
BY	JML	
THE DATE OF THIS DRAWING IS 11/19/94. THE DATE OF THE ORIGINAL DRAWING IS 11/19/94. THE DATE OF THE REVISION IS 11/19/94.		
THIS DRAWING IS THE PROPERTY OF WARN INDUSTRIES, INC. IT IS TO BE USED ONLY FOR THE PROJECT AND FOR THE QUANTITY SPECIFIED THEREON. IT IS NOT TO BE REPRODUCED OR TRANSMITTED IN ANY FORM OR BY ANY MEANS, ELECTRONIC OR MECHANICAL, INCLUDING PHOTOCOPYING, RECORDING, OR BY ANY INFORMATION STORAGE AND RETRIEVAL SYSTEM.		
SERIES 12-A-2D		
HILL SHEET 2 OF 2		
HILL 30290		

APR 01 2001

PN 30290 Series 12 A 24 V

NOTE: WHEN ORDERING PLEASE GIVE WINCH MODEL & SERIAL NUMBER.
Parts may be obtained through your local dealer or distributor.

PART NO	QTY	DESCRIPTION
31682	1	ELECTRIC MOTOR, 24 VDC,
19485	1	BRUSH SET, 24 VDC
15271	2	MOTOR SHAFT SPACER
8316	1	BALL BEARING
32062	1	DRUM DUST MASK
24800	1	ELECTRIC THERMAL SWITCH
6005	2	CLAMP. HOSE
30260	1	BRAKE DRIVER, ELECTRIC
30274	2	DRUM BUSHING, NYLON
61736	6	SOC HD CAPSCREW 3/8"-16 X .75" LONG
31680	1	DRUM SUPPORT ASSY (ELECTRIC MOTOR END),
30268	3	TIE ROD
30275	2	OIL SEAL, RADIAL
30277	2	THRUST WASHER, NYLON
31683	1	BRAKE ASSEMBLY, ELECTRIC,
31672	1	BALL BEARING WITH TOLERANCE RING
31671	1	DRUM ASSEMBLY
36974	1	SET SCREW
31675	1	DRUM SUPPORT, (GEARTRAIN END)
14964	2	GASKET
30329	1	DRIVE SHAFT ADAPTER
30315	1	HEX SHAFT
30335	1	CARRIER ASSEMBLY (STAGE 3)
31679	1	RING GEAR ASSY(STAGE 3),
24563	1	CARRIER ASSEMBLY (STAGE 2)
15581	2	RETAINING RING
34837	1	CLUTCH RING GEAR
16086	1	CLUTCH RETAINER
15643	1	CARRIER ASSEMBLY (STAGE 1)
24832	1	SUN GEAR, INPUT
21009	1	THRUST PLATE
39928	1	CLUTCH LEVER ASSY,
31684	1	GEAR HOUSING ASSEMBLY
15603	10	SOC HD CAPSCREW, 1/4"-20 X 3" LONG
27896	1	LABEL, NAMEPLATE, SERIES 12
34552	1	LABEL, WARNING

APR 0 1 2001

PN 30290 Series 12 A 24 V

NOTE: WHEN ORDERING PLEASE GIVE WINCH MODEL & SERIAL NUMBER.
Parts may be obtained through your local dealer or distributor.

PART NO.	QTY.	DESCRIPTION
30331	1	LABEL, DRUM ROTATION
34551	1	LABEL, CLUTCH ENGAGEMENT
36648	1	CONTROL PACK COVER
36942	1	CONTROL PACK 24 VDC,
31506	1	INDUSTRIAL REMOTE CONTROL
34978	1	CONTACTOR, REPLACEMENT

APR 01 2001