

# ARB AIR LOCKER *Air Operated Locking Differentials*

## **RD155** Mitsubishi 9.5",33 SPL,IRS

### Specs:

Axle Spline	33 tooth, Ø35.77mm [1.41"]
Ratio Supported	All
Ring Gear ID	144.97mm [5.71"]
Ring Gear OD	241.3mm [9.5"]
Ring Gear Bolts	12 bolts on Ø175mm [6.89"]
Ring Gear Torque	152Nm [112 ft-lb]
Backlash	0.13-0.18mm [0.005-0.007"]
Bearing Cap Torque	74Nm [55 ft-lb]

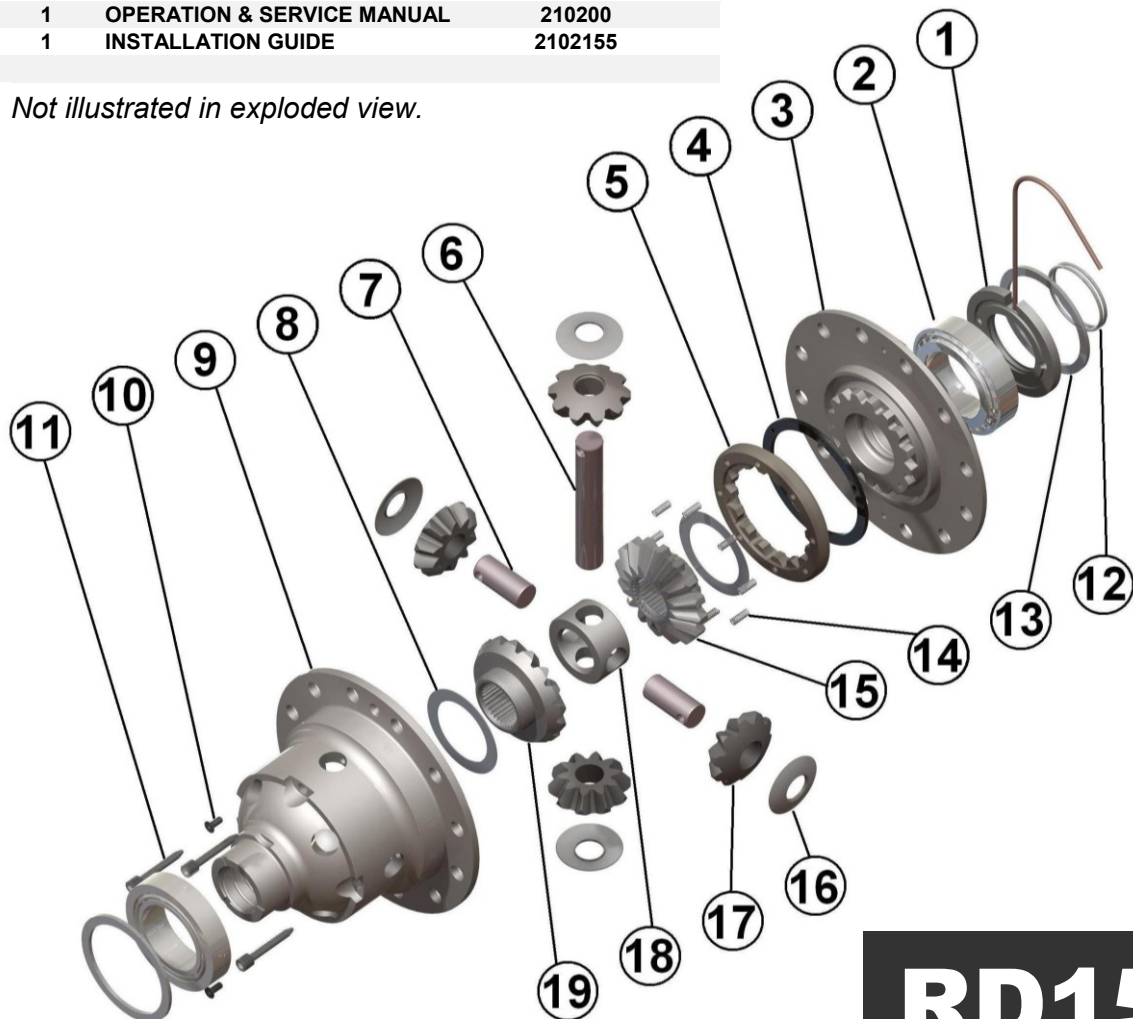
ITEM #	QTY	DESCRIPTION	PART #	NOTES
01	1	SEAL HOUSING ASSEMBLY	081813	
02	-	TAPERED ROLLER BEARING	NOT SUPPLIED	
03	1	FLANGE CAP ASSEMBLY	027324	
04	1	BONDED SEAL	160702	
05	1	CLUTCH GEAR	050806	
06	1	LONG CROSS SHAFT	060204	
07	2	SHORT CROSS SHAFT	060403	
08	2	SIDE GEAR THRUST WASHER	151010	
09	1	DIFFERENTIAL CASE	013024	
10	2	COUNTERSUNK SCREW	200213	
11	3	RETAINING PIN	120601	
12	2	SEAL HOUSING O-RINGS	160207	1
13	1	SHIM KIT	SHK005	
*	1	MASTER SHIM	150341	
14	8	RETURN SPRINGS	150113	
15	1	SPLINED SIDE GEAR	SEE NOTE	2
16	4	PINION THRUST WASHER	151110	
17	4	PINION GEAR	SEE NOTE	2
18	1	SPIDER BLOCK	070201	
19	1	SIDE GEAR	SEE NOTE	2
*	1	BULKHEAD FITTING KIT (O-RING TYPE)	170111	
*	1	PUSH-IN FITTING (5mm to 1/8" BSPP)	170201	
*	1	NIPPLE (1/8" to 1/8" BSPT)	170501	
*	1	AIR LINE (5mm DIA X 6m LONG)	170301	
*	1	SOLENOID VALVE (12V)	180103	
*	1	SWITCH	180209	
*	1	SWITCH COVER (REAR)	180211	
*	10	CABLE TIE	180301	
*	1	WARNING LABEL	210101	
*	1	BUMPER STICKER	210102	
*	1	OPERATION & SERVICE MANUAL	210200	
*	1	INSTALLATION GUIDE	2102155	

### Notes:

- 1 For replacement O-rings use only BS136 Viton 75.
- 2 Available only as complete 6 gear set # 728H221

For 31 spline live axle models, please refer to RD154 ([Section 2.154](#))

\* Not illustrated in exploded view.



# RD155

